

LOTS 23-27 & PART OF LOTS 5,6 & 22, BLOCK 4

29

SOUTH OGDEN SURVEY

IN OGDEN CITY

TAXING UNIT: 25, 252

SCALE 1" = 50'

CHARLES HENRY JOHNSON, JR
& WF HELEN MILLER
(040290046)

SEE BOOK 1, PAGE 3

28TH

STREET

AREA

(LEWIS SCHOOL)

THE BOARD OF EDUCATION
OF OGDEN CITY
040290022

AVENUE

SEE PAGE 31

N 0°58' E

ADAMS

JPS 6-95

FOR COMPLETE ENG DATA SEE
ORIGINAL DEDICATION PLAT IN
BOOK 2, PAGES 3 & 4 OF RECORDS.

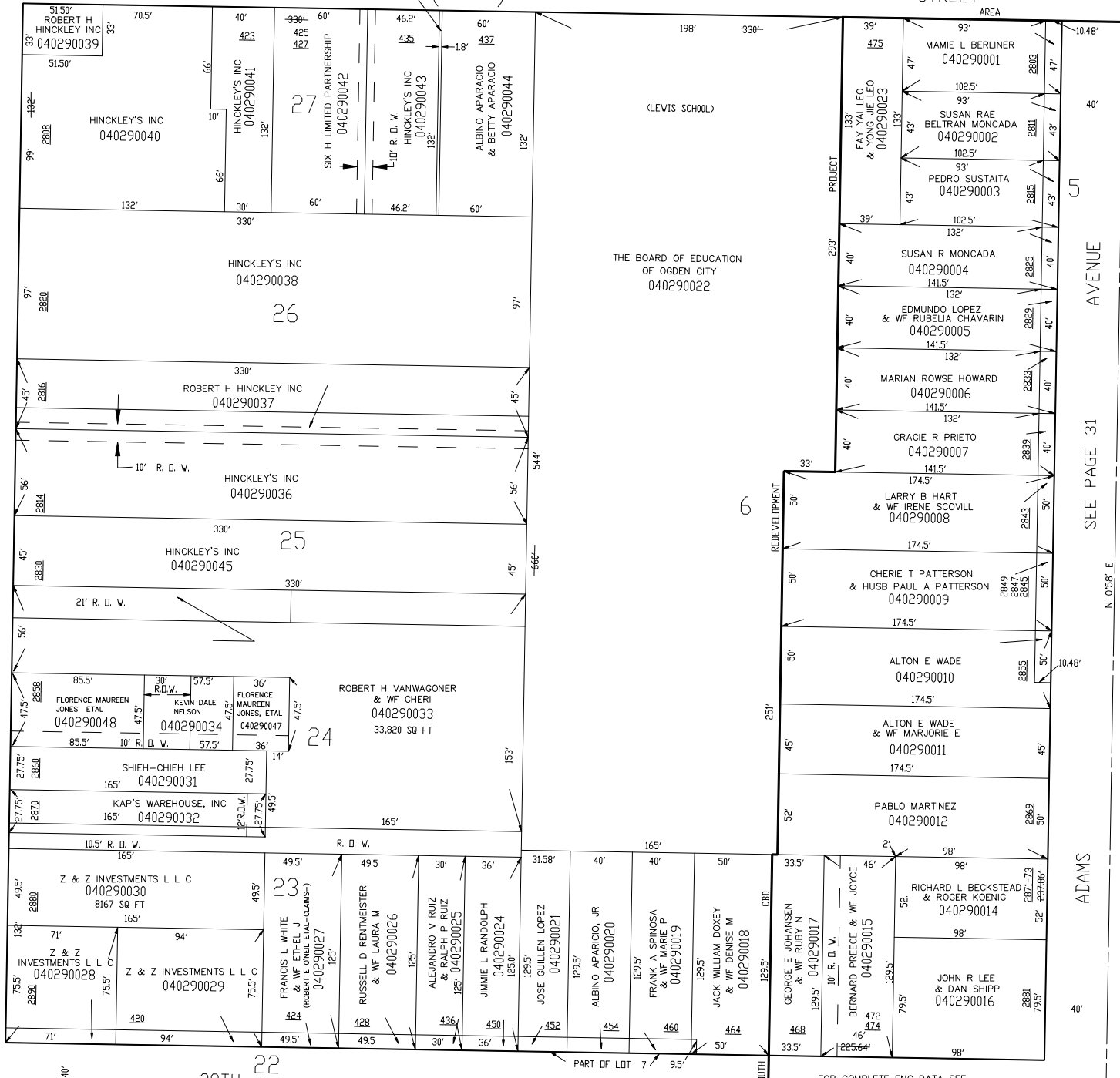
SOUTH STREET

S 89°02' E

SEE PAGE 27

NOTE: ALL FIGURES FROM OGDEN CITY ENG DEPT PLATS

4



BLVD

WASHINGTON

SEE PAGE 41

N 0°58' E

66'

66'